

Opening Ports for XVL License Manager

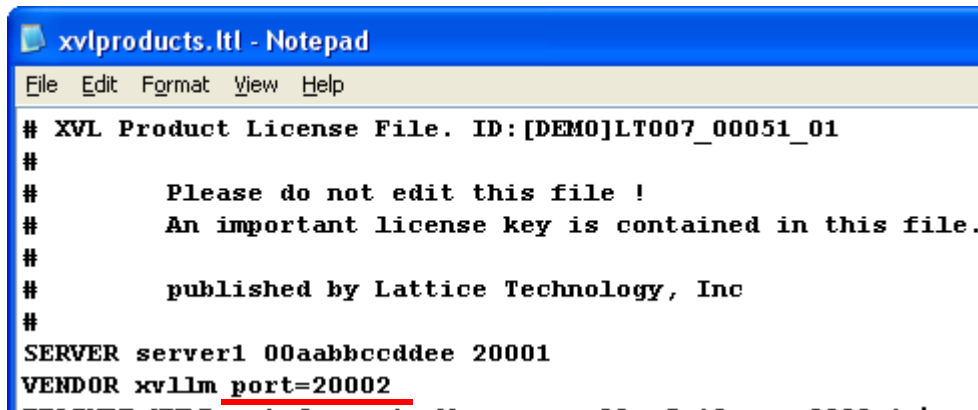
Lattice Technology, Inc.
Customer Support
support@lattice3d.com

Due to recent security enhancements from Microsoft, setting up floating license server using XVL License Manager may require additional efforts. In this document, we will provide you with additional steps that may be necessary when you try to setup a floating license environment.

Specifying the Port Number for the Vendor Port

In a Firewall-based secured network environment, it may be necessary to specify the communication port in the VENDOR line of the license file.

1. Open the floating license file with a text editor.
2. Find the line starting with “VENDOR”.
3. At the end of the VENDOR line, add a port number.



```
xvlproducts.ltl - Notepad
File Edit Format View Help
# XVL Product License File. ID:[DEMO]LT007_00051_01
#
# Please do not edit this file !
# An important license key is contained in this file.
#
# published by Lattice Technology, Inc
#
SERVER server1 00aabbccdde 20001
VENDOR xvllm port=20002
```

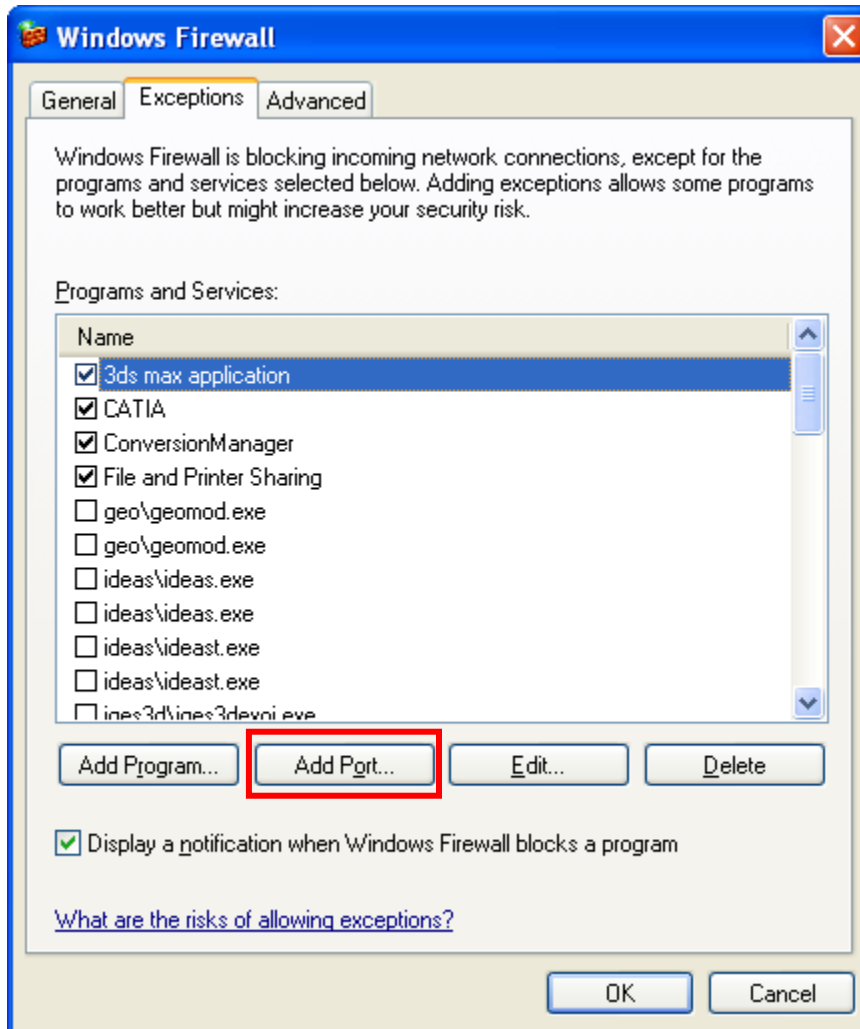
4. Restart XVL License Manager.

In this example, we use ports 20001 and 20002 for the Server Port and Vendor Port, respectively.

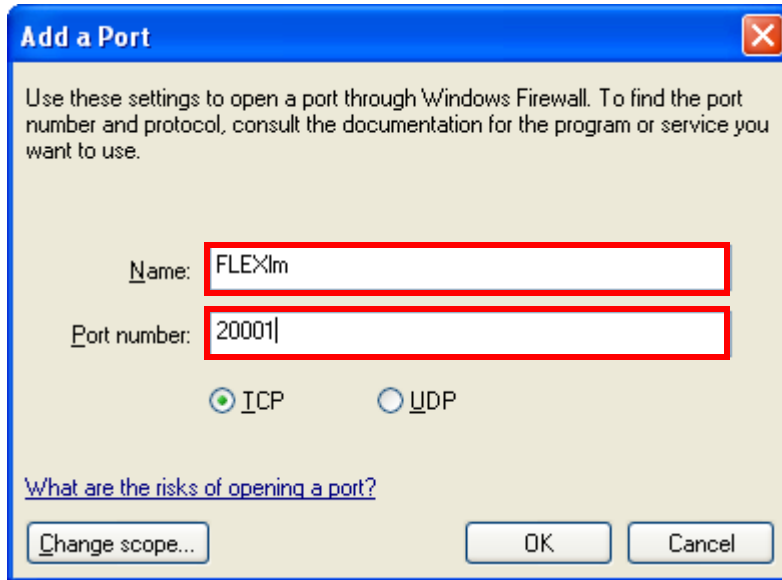
Opening Ports in Windows Firewall

In addition to specifying the Vendor Port, you may need to manually open the communication ports on Windows Firewall.

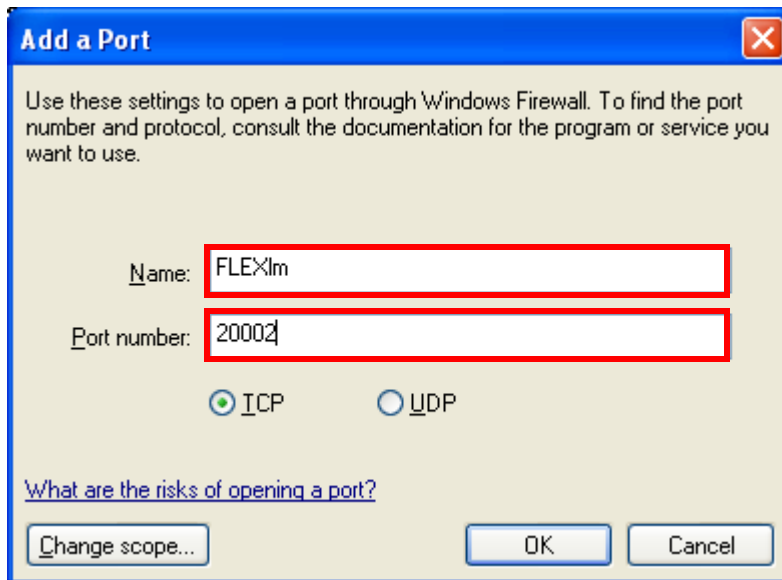
1. Select **Start > All Programs > Control Panel** to open the Control Panel.
2. From the Control Panel, double-click on **Security Center**.
3. From the Security Center, click on **Windows Firewall**.
4. In the Windows Firewall dialog, select the **Exceptions** tab and click on **Add Port**.



5. In the Add a Port dialog, give a name and a port number to open necessary communication for XVL License Manager.



6. Repeat the same operation for the other port.



7. Dismiss the Windows Firewall dialog by clicking on the OK button.